



DIGITAL SIGNAGE

Products and Solutions Catalogue



01 Content Management

03 Industries

05 Digital Posters

06 Professional Monitors and Video Walls

07 Window Displays

11 Outdoor Displays

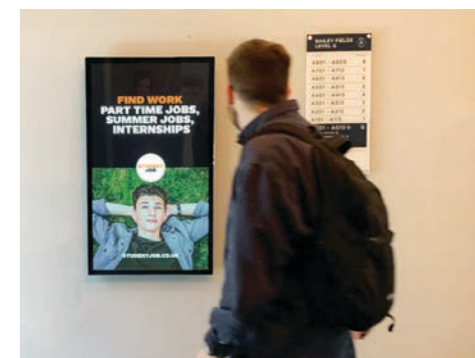
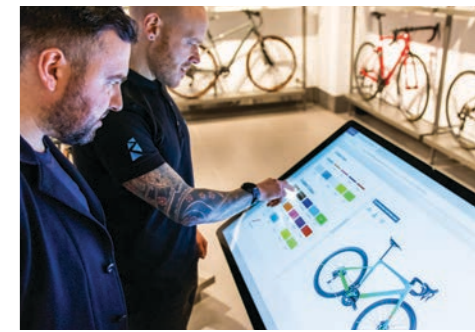
13 Touch Screens

15 Small Sized and Wide Format Displays

17 Media Players

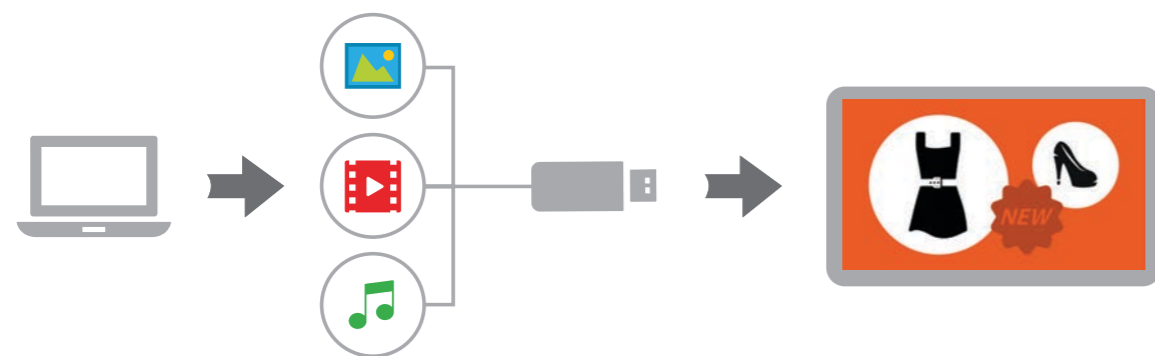
19 Direct View LED

21 Content Management System



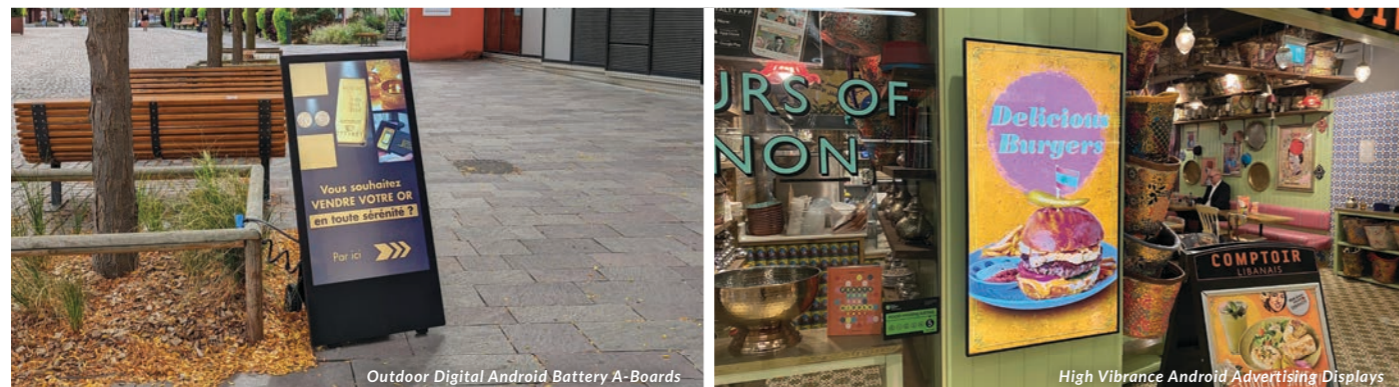
Integrated Digital Signage Solutions

Digital signage projects typically require a commercial display, a media player and a content management system (CMS) software platform. These requirements usually come from three separate sources, which not only creates difficulties when finding compatible components but also makes the support and maintenance process inefficient. The installation process, especially for large networks, can be very challenging and if any issues arise, finding the component at fault and receiving the adequate support can be very time consuming and expensive. To combat these issues, we've developed **all-in-one solutions** that combine **24/7 commercial displays** with **built-in media players** alongside powerful **CMS software** to be used in conjunction with our hardware. All-in-one solutions are not only easier to sell, install, support and maintain but are also much more cost effective. Our software has also been developed as a more **streamlined and user-friendly** solution to offer a simple and easy process to all users while still providing **extensive functionality**. Using over a decade of industry experience and research we have developed a range of **diverse digital signage solutions** that can be controlled either by using our online CMS, or updated using a simple USB plug and play method.



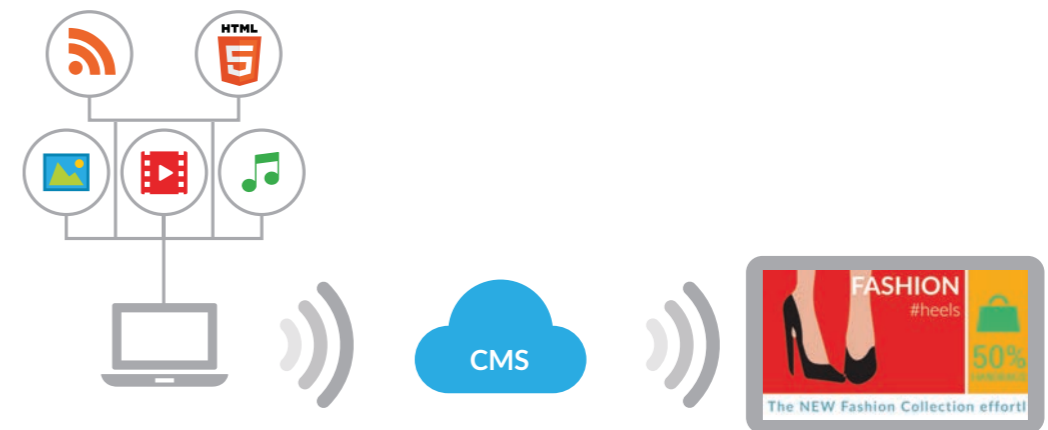
Simple Plug and Play Solution

All of our Android based non-interactive displays can be updated by simply **loading images and videos onto a USB stick** and inserting this into the display. You then wait for your content to copy over, remove the USB stick and your images and videos will play in a continuous loop. This process has made **digital signage solutions accessible to any business** since there is no need to have any IT knowledge or technical resources in order to enjoy the benefits of this dynamic and captivating form of display. All of our Android based standalone plug and play solutions can also be **upgraded to utilise the benefits of our network CMS platform** at the point of purchase or at any point in the future, for a fully future-proof system.



Outdoor Digital Android Battery A-Boards

High Vibrance Android Advertising Displays



All-in-One Network Solution

Our award winning all-in-one network screens provide you with a fully integrated, hassle-free, networked digital signage solution. With minimal hardware setup required, **these displays truly deliver an out-of-the-box experience**. Once your screen is plugged into the mains, all that is left to do is connect it to the internet; via Wi-Fi, Ethernet cable or 4G. You can then **login to our user-friendly online CMS portal** and update, control and monitor your displays from anywhere in the world; allowing you to display what you like, when you like. You can even **compose interactive content for touch screens** using the same platform. For more in all the available features, go to page 21.



Slimline Pro Advertising Displays

Outdoor Digital Advertising Displays

Industries

Retail

The retail sector is by far the most popular area for digital signage, with shops fighting to grab customers' attention in a competitive battleground. When compared to static signage, digital signage captures 400% more views¹. We have an array of different digital signage solutions that are ideal for retail spaces. Our portfolio includes **Window Displays**, a selection of digital posters such as our **Slimline Pro Advertising Displays**, a variety of **touch screens** and **DV-LED Displays**; we truly have solutions for any retail requirement.



Food and Drink

This sector is the fastest growing area for digital signage. Large fast-food chains are already taking advantage of the tremendous benefits of digital signage and it's not surprising since it creates a 31.8% upswing in overall sales volume¹. We offer a range of different solutions, from **Slimline Pro Advertising Displays** with a wipe-clean tempered glass front, to cost-effective narrow bezel **Network Digital Menu Boards**.



Corporate

The integration and application of commercial display technology into the office spaces and meeting rooms continues to grow. The most obvious use for digital signage in corporate locations is in the boardroom, using **LCD and DV-LED Video Walls** as well as **4K Slim Bezel Interactive Touch Displays** as presentation tools. The use of digital signage for internal communication is another developing area that has proven to increase productivity by 20%-25%¹.



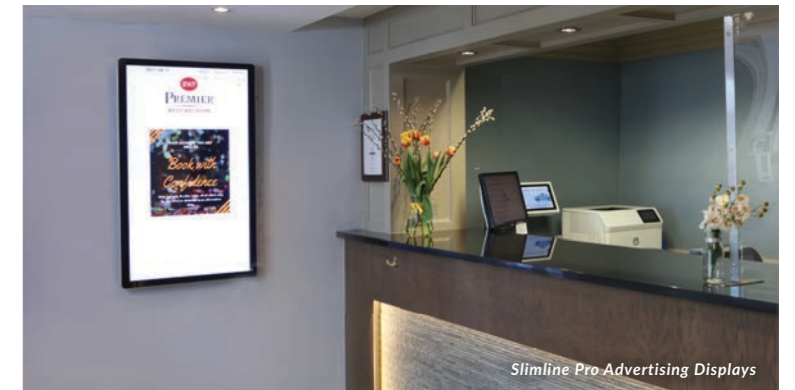
Healthcare

Digital signage is transforming the way that hospitals and healthcare facilities communicate with staff and patients. The **Android PCAP Touch Screens**, when used in hospital and medical facilities, are perfect for use in hospitals and medical facilities for wayfinding or displaying healthcare information thanks to their easy to clean edge-to-edge glass front. A Digital signage offers a chance for hospitals to inform, engage and interact with their patients to improve the level of care that they offer.



Hospitality

Hospitality settings such as hotels, resorts, nightclubs and catering venues have a captive audience looking for information, so they are a natural home for digital signage. Eye-catching displays, such as our elegant and aesthetically pleasing **Android Freestanding Digital Posters** and wall-mounted **Slimline Pro Advertising Displays**, can be used to boost customer satisfaction by 46%¹.



Transport

Transport hubs such as airports, train and bus stations, and even bus stops have become the most common places to encounter digital signage. Whether it is to display arrival and departure times or in duty free areas, with digital signage 90% of train station passengers can be targeted². We offer a wide range of solutions, from **Professional Monitors** and **Android Freestanding Digital Posters** to **DV-LED and LCD Video Walls**, ideal for displaying information and advertising in transportation spaces.



Education

Educational establishments are ideal environments to really get the most out of digital signage and commercial displays. The most common solution for schools, colleges, universities and other training facilities are **4K Slim Bezel Interactive Touch Displays** used as interactive whiteboards, with 75% of teachers agreeing that this technology increases students' interest in class³. **Slimline Pro Advertising Displays** can also be used as digital notice boards to communicate the latest information to students, staff and visitors.



Entertainment

Locations such as casinos, theatres, cinemas, zoos, concert halls and theme parks are perfect settings for digital signage. When commercial displays are utilised in these locations average purchases increase by 29.5%¹. Our eye-catching **Android Freestanding Digital Posters** can be utilised to display any message, promotional or not. For an even bigger impact, **LCD and DV-LED Video Walls** can be implemented to create a truly memorable experience.



Digital Posters



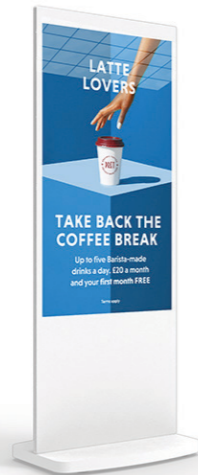
Android Freestanding Digital Posters



Slimline Pro Advertising Displays 19" | 22" | 32" | 43" | 50" | 55"

Premium displays that combine stunning tablet-like aesthetics with a robust protective enclosure and tempered glass face.

- Giant Tablet Styling
- Lightweight Design
- Toughened Safety Glass



Android Freestanding Digital Posters 50" | 55" | 65"

Show-stopping digital advertising totems with giant tablet styling.

- Giant Tablet Styling
- Internal Locker/AV Inputs
- Retractable Castors
- 4K Display (65" Model Only)



Network Digital Menu Boards 32" | 43" | 50" | 55"

Cost-effective package solution; 24/7 commercial grade displays with built-in network media player and 1 year CMS software subscription.

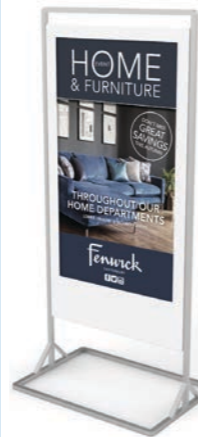
- FREE Network Upgrade
- FREE 1 Year CMS Subscription
- Narrow Bezel



High Vibrance Android Advertising Displays 43" | 55"

Perfect for brightly-lit retail environments or as a budget friendly window display.

- 700cd/m² Brightness
- Landscape or Portrait Orientation
- Narrow Bezel



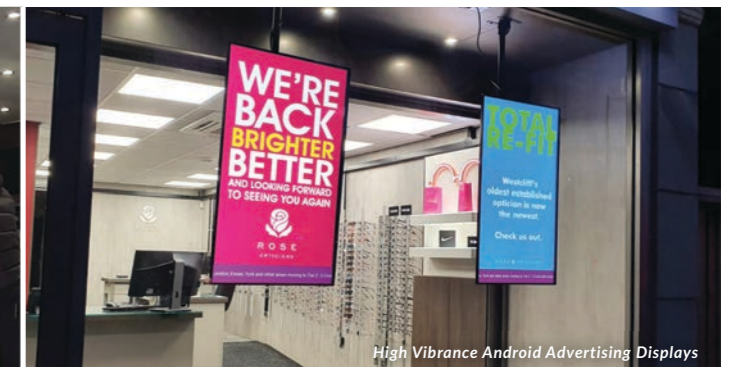
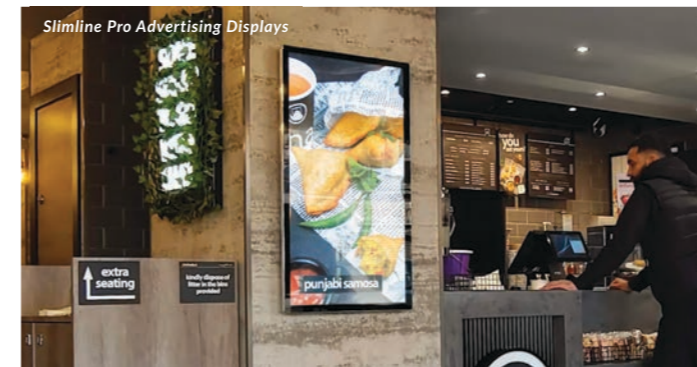
Superslim Freestanding Double-Sided Digital Posters 43" | 55"

Dual-sided advertising displays with incredibly slim depth and striking brushed aluminium frame.

- Different Content Both Sides*
- Premium Brushed Aluminium Finish
- Lightweight Design

*Network Upgrade Required

	Slimline Pro Advertising Displays	Android Freestanding Digital Posters	Network Digital Menu Boards	High Vibrance Android Advertising Displays	Superslim Freestanding Double-Sided Digital Posters
Screen Sizes	19" 22" 32" 43" 50" 55"	50" 55" 65"	32" 43" 50" 55"	43" 55"	43" 55"
Glass Tempered Front	✓	✓	✗	✗	✗
Alluminium Surround	✓	✓	✗	✗	✓
Retractable Castors	✗	✓	✗	✗	✗
Brightness	19" & 22": 350cd/m² 32"-55": 450cd/m²	450cd/m²	450cd/m²	700cd/m²	700cd/m² Both Sides
Double-Sided	✗	✗	✗	✗	✓
Narrow Bezel	✗	✗	✓	✓	✗
Internal Locker	✗	✓	✗	✗	✗
Free Network Upgrade	✗	✗	✓	✗	✗
Free 1 Year CMS Subscription	✗	✗	✓	✗	✗
Free Wall Mount	✓	✗	✗	✗	✗



Professional Monitors and Video Walls



Professional Monitors



Professional Monitors 32" | 43" | 50" | 55"

Adaptable 24/7 commercial grade AV monitor with simple digital signage media player.

- Budget Friendly 24/7 Display
- Built-in Video Matrix Processor
- USB Playback



Economy Professional Monitors 43" | 55"

Budget-friendly 24/7 commercial grade 4K AV monitor.

- Budget Friendly 24/7 Display
- 4K Resolution
- Attach External Devices



4K Large Format Commercial Displays 65" | 75" | 86"

Ultra-high definition professional monitors with built-in Android media player.

- Remarkable 4K Display
- Lightweight Design
- Integrated Android Media Player



LCD Video Wall Displays 49" | 55"

Go big using our 4K compatible video wall panels, with automatic tiling to fill any space.

- 4K Daisy Chain Tiling
- Narrow Bezel (3.5mm Screen to Screen)
- Easy Install Handles



Ultra-Narrow Bezel LCD Video Wall Displays 55"

The ultimate eye-catching solution that creates immersive experiences thanks to their near invisible 0.44mm even bezels.

- 4K Daisy Chain Tiling
- Narrow Bezel (0.88mm Screen to Screen)
- Easy Install Handles

	Professional Monitors	Economy Professional Monitors	4K Large Format Commercial Displays	LCD Video Wall Displays	Ultra-Narrow Bezel LCD Video Wall Displays
Screen Sizes	32" 43" 50" 55"	43" 55"	65" 75" 86"	49" 55"	55"
Bezel Size	Narrow	Narrow	Narrow	Super-Narrow	Ultra-Narrow
Brightness	450cd/m ²	350cd/m ²	450cd/m ²	500cd/m ²	500cd/m ²
Integrated Matrix Processor	✓	✗	✗	✓	✓
BNC Connection	✓	✗	✗	✗	✗
Resolution	1920x1080	3840x2160	3840x2160	1920x1080	1920x1080
4K Compatible	✗	✓	✓	✓	✓
Easy Install Handles	✗	✗	✓	✓	✓
Integrated Speakers	✓	✓	✓	✗	✗
USB Plug and Play	✓	✗	✓	✗	✗
Integrated Android Media Player	✗	✗	✓	✗	✗



LCD Video Wall Displays

4K Large Format Commercial Displays

Window Displays



Ultra High Brightness Hanging Double-Sided Displays 49" | 55"

Maximise window displays by broadcasting content inwards and outwards, even in direct sunlight.

3,500cd/m² & 1,000cd/m² Sunlight Readable

Different Content Both Sides*

Ceiling Mount Included



Hanging Double-Sided Window Displays 43" | 55"

Maximise window displays by broadcasting content inwards and outwards.

700cd/m² & 700cd/m² Sunlight Readable

Different Content Both Sides*

Super Slim Design



Ultra High Brightness Window Displays 43" | 49" | 55" | 65"

Designed for outward-facing window displays in direct sunlight.

3,500cd/m² Sunlight Readable

Lightweight Enclosure

Sleek Thin Bezel



Digital Rod Displays 15"

Bring estate agent windows to life with this state-of-the-art digital signage technology that replaces traditional light pockets.

1,000cd/m² Sunlight Readable

Low Voltage Powered

Synchronise Multiple Displays

	Ultra High Brightness Window Displays	Ultra High Brightness Hanging Double-Sided Displays	Hanging Double-Sided Window Displays	Digital Rod Displays
Screen Sizes	43" 49" 55" 65"	49" 55"	43" 55"	15"
Brightness	3,500cd/m ²	Outside Facing: 3,500cd/m ² Inside Facing: 1,000cd/m ²	700cd/m ² Both Sides	1,000cd/m ²
Narrow Bezel	✓	✗	✗	✗
Ultra Resistant to Blackening	✓	✓	✓	✗
Double Sided	✗	✓	✓	✗
Low Voltage Power	✗	✗	✗	✓
Ceiling Mount Included	✗	✓	✓	✗
Optional Ambient Light Sensor	✓	✗	✗	✗
Freestanding Option Available	✗	✓	✓	✗



*Network Upgrade Required

Outdoor Displays



Outdoor Digital Advertising Displays



Outdoor Digital Advertising Displays

22" | 32" | 43" | 49" | 55" | 65" | 75" | 86"

Fully integrated stunning tablet-style displays; perfect for any weather conditions.

- 2,500cd/m² Direct Sunlight Readable*
- IP65 Rated Enclosure
- Touch Screen Version Available

*22" has a brightness of 2,000cd/m²



Outdoor Freestanding Digital Posters

43" | 49" | 55" | 65" | 75" | 86"

Stunning outdoor totems; perfect for any weather conditions.

- 2,500cd/m² Direct Sunlight Readable
- IP65 Rated Enclosure
- Vandal Proof
- Easy Maintenance

Outdoor Digital Android Battery A-Boards

43"

Fully portable solution ideal for any environment; display content all day and night on a single charge.

- Tempered Anti-Glare Glass
- IP65 Rated Enclosure
- 27 Hour Running Time
- 700cd/m² Brightness



High Brightness Outdoor Digital Android Battery A-Boards

43"

Sunlight readable and fully portable solution for any space; display content all day and night from a single charge.

- Tempered Anti-Glare Glass
- IP65 Rated Enclosure
- 27 Hour Running Time
- 1,500cd/m² Direct Sunlight Readable



	Outdoor Digital Advertising Displays	Outdoor Freestanding Digital Posters	Outdoor Digital Android Battery A-Boards	High Brightness Outdoor Digital Android Battery A-Boards
Screen Sizes	22" 32" 43" 49" 55" 65" 75" 86"	43" 49" 55" 65" 75" 86"	43"	43"
Brightness	2,500cd/m ² *	2,500cd/m ²	700cd/m ²	1,500cd/m ²
IP65 Rated Enclosure	✓	✓	✓	✓
Ambient Light Sensor	✓	✓	✓	✓
Glass Treatment	Anti-Reflective	Anti-Reflective	Anti-Glare	Anti-Glare
Free Wall Mount	✓	✗	✗	✗
Removable Base	✗	✓	✗	✗
Portable	✗	✗	✓	✓
Internal Locker	✓	✓	✗	✗
Touch Screen Version Available	✓	✓	✗	✗
Battery Powered Display	✗	✗	✓	✓
Battery Running Time	✗	✗	27 Hours	27 Hours



Outdoor Digital Android Battery A-Boards



Outdoor Freestanding Digital Posters

Touch Screens



Android PCAP Touch Screens

PCAP Touch Screen Monitors

	Android PCAP Touch Screens	PCAP Touch Screen Monitors	Android PCAP Touch Screen Kiosks	PCAP Self Service Kiosks	Freestanding PCAP Touch Screen Posters	4K Slim Bezel Interactive Touch Displays
Screen Sizes	22" 32" 43" 50" 55"	22" 32" 43" 50" 55"	43" 50" 55"	22" 27"	50" 55"	55" 65" 75" 86"
Touch Points	10	10	10	10	10	20
Touch Technology	PCAP	PCAP	PCAP	PCAP	PCAP	Infrared
Operating System	Android	Windows (Optional OPS PC)	Android / Windows (Optional OPS PC)	Windows	Android	Android
Optional OPS PC	✗	✓	✓	✓	✗	✓
Internal Locker	✗	✗	✓	✓	✓	✗
Mounting	Wall Mounted	Wall Mounted/ Open Frame	Freestanding	Wall Mounted/ Freestanding/ Tabletop*	Freestanding	Wall Mounted
Integrated Printer and Scanner	✗	✗	✗	✓	✗	✗
Wireless Mirroring and File Sharing	✗	✗	✗	✗	✗	✓



Android PCAP Touch Screens 22" | 32" | 43" | 50" | 55"

Perfect for interactive experiences, such as wayfinding and product browsing.

- Giant Tablet Styling
- Free Wall Mount
- Integrated Android Media Player



PCAP Touch Screen Monitors 22" | 32" | 43" | 50" | 55"

Interactive touch solution with open frame and integrated Windows options available; ideal for kiosk integration or wall-mounted applications.

- Optional Open Frame Bracket Included
- Optional Integrated Windows OPS PC
- Attach External Devices



Android PCAP Touch Screen Kiosks 43" | 50" | 55"

Fully integrated kiosk solution featuring rear ports and connections for use with built-in or third party PC.

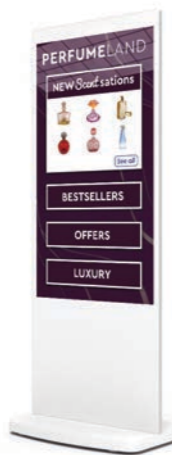
- All in One Touch Kiosk
- Integrated Android Media Player
- Internal Locker



PCAP Self Service Kiosks 22" | 27"

Self-ordering touch screen solution for quick service restaurants with integrated QR code scanner and receipt printer.

- Easy Roll Replace
- Built-In Windows PC
- Anti-Theft Mounting Options
- Additional Mounting Solutions



Freestanding PCAP Touch Screen Posters 50" | 55"

Commercial touch totems with giant tablet styling; perfect for creating interactive experiences.

- Giant Freestanding Tablet
- Integrated Android Media Player
- Internal Locker
- Retractable Castors



4K Slim Bezel Interactive Touch Displays 55" | 65" | 75" | 86"

Interactive whiteboard solution for meeting rooms with integrated annotation and mirroring software.

- 4K 4K Display
- Optional OPS Windows PC
- Smart Pen Stylus



Android PCAP Touch Screen Kiosks



Freestanding PCAP Touch Screen Posters



PCAP Self Service Kiosks



4K Slim Bezel Interactive Touch Displays

*22" Only

Small Sized and Wide Format Displays



POS Android Advertising Displays



POS Android Advertising Displays
10" | 15"

Tablet-sized commercial displays for retail shelf edge and point of sale applications.



Power Over Ethernet (PoE)



Integrated VESA Mounting Holes



No Integrated Battery



POS Network Android PCAP Touch Screens
10" | 15"

Small-sized touch displays, ideal for meeting room booking or point-of-sale applications.



Power Over Ethernet (PoE)



Ten Point PCAP Touch Screen



Seven Colour LED Frame



Ultra-Wide Stretched Bar Displays
28" | 37"

Perfect as a banner-style endcap display in retail stores and supermarkets.



Clear HD Resolution



High Brightness



Free Network Upgrade

Ultra-Wide Stretched Bar Monitors
58:9 (76")

Perfect as a banner-style endcap display in retail stores and supermarkets.



Ultra 4K Resolution



Free Wall Mount



Optional Android Media Player



Shelf Edge Touch Displays
23"

Grab shoppers' attention on retail shelving units with interactive eye-catching digital endcap displays.



In-Cell PCAP Touch



Narrow Bezel



700cd/m² Brightness

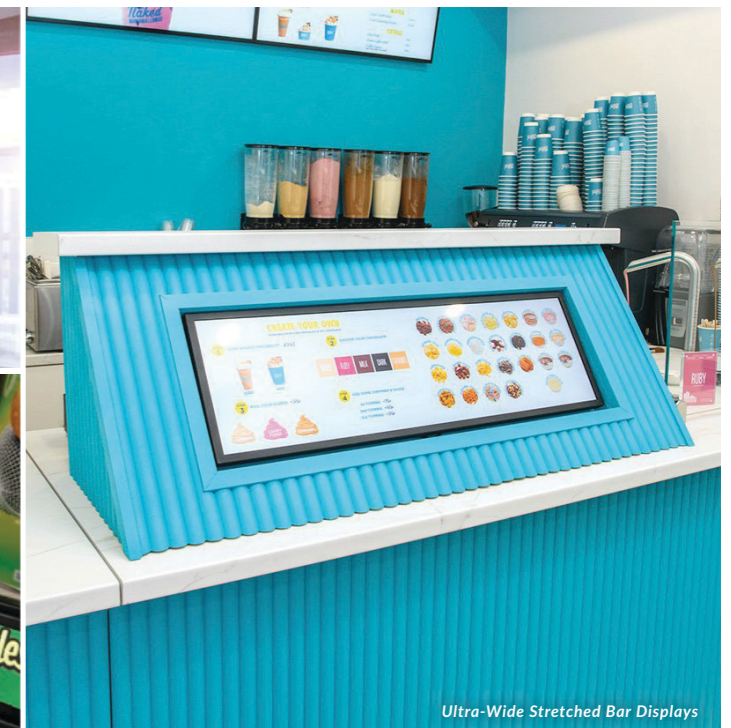
	POS Android Advertising Displays	POS Network Android PCAP Touch Screens	Ultra-Wide Stretched Bar Displays	Ultra-Wide Stretched Bar Monitors	Shelf Edge Touch Displays
Screen Sizes	10" 15"	10" 15"	28" 37"	76" (58:9)	23"
PoE	✓	✓	✗	✗	✗
Touch Screen	✗	✓	✗	✗	✓
Brightness	250cd/m²	250cd/m²	28": 700cd/m² 37": 1,000cd/m²	500cd/m²	700cd/m²
Free Mounting Bracket	✓	✓	✓	✓	✗
Narrow Bezel	✗	✗	✓	✗	✓
Integrated Camera	✓	✓	✗	✗	✗
Seven Colour LED Frame	✓	✓	✗	✗	✗
USB Plug and Play	✓	✗	✓	✗	✗



POS Network Android PCAP Touch Screens



Shelf Edge Touch Displays



Ultra-Wide Stretched Bar Displays

Media Players



Standalone Android Media Players

Transform existing screens into digital signage with our powerful standalone player with scheduling software.



- USB Plug and Play
- 24/7 Commercial Use
- Power Timer



Cloud Network Android Media Players

Transform existing screens into networked digital signage displays.



- Wireless Updates
- Android 7.1 Operating System
- Performance Enhanced Enclosure

4K Cloud Network Android Media Players

Transform existing screens into 4K networked digital signage displays



- Wireless Updates
- Android 10 Operating System
- USB Plug and Play
- 24/7 Commercial Use



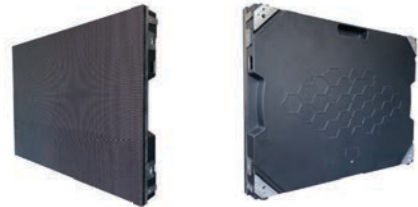
	Standalone Android Media Players	Cloud Network Android Media Players	4K Cloud Network Android Media Players
Plug and Play	✓	✓	✓
Resolution	HD: 1920x1080	HD: 1920x1080	4K: 3840x2160
Remote Updates	✗	✓	✓
Multiple Media Zones	✗	✓	✓
3.5mm Audio Output	✓	✓	✓
HDMI Output	✓	✓	✓
4 x USB Ports	✓	✓	✓
Android Version	Android 7.1	Android 7.1	Android 10
4G Upgrade Available	✗	✓	✓



Direct View LED



MODULAR SOLUTIONS



Indoor DV-LED P1.8 | P2.5

Elevate the traditional digital signage experience with flexible next-generation audience engagement.

- Captivating Image Quality
- Complete Packaged Solution
- UK Stock Held
- Modular Cabinets for Any Space



Outdoor DV-LED P4 | P6

Rugged and bespoke outdoor digital signage solutions optimised for crystal clear distant viewing.

- Captivating Image Quality
- Outstanding High Brightness
- IP Rated Weatherproof Enclosure
- Modular Cabinets for Any Space

ALL-IN-ONE PACKAGE SOLUTIONS



DV-LED Window Displays 116" | 157" | 231"

Out-of-the-box solution for seamless large-scale advertising; ideal for storefront windows.

- Optimised for Window Displays
- 2,200cd/m² Sunlight Readable
- Flexible Mounting Solutions



Fine Pitch Presentation DV-LED Video Walls 138" | 165"

The ultimate seamless video wall designed for conference and board rooms.

- Integrated Android
- HD Display
- Optimised For Meeting Rooms



Outdoor DV-LED Shop Fascias 156" | 193"

Bring your shop front to life with this all-in-one complete package outdoor DV-LED solution with incredible brightness and contrast.

- Outstanding High Brightness
- IP Rated Weatherproof Enclosure
- Mounting Bracket Included

	Indoor DV-LED	Outdoor DV-LED	DV-LED All-in-One Window Displays	Fine Pitch Presentation Video Walls	Outdoor DV-LED Shop Fascias
	Modular Solutions		Package Solutions		
Pixel Pitches/Resolution	P1.8 P2.5	P2.5	P4 P6	P2.5	1920x1080
Sizes	Front		Front and Rear	116" 157" 231"	138" 165"
Serviceability	Front		Front and Rear	Front	Front
Brightness	800cd/m ²	2,200cd/m ²	P4: 6,500cd/m ² P6: 8,500cd/m ²	2,200cd/m ²	550cd/m ²
UK Stock Held	✓	✓	✓	✗	✓
Mounting Bracket Included	✓	✗	✗	✓	✓
Weatherproof	✗	✓	✗	✗	✓
Protective Edge	✓	✗	✓	✓	✗
Optional Ambient Light Sensor	✓	✓	✓	✗	✓



Content Management System



Our Content Management System allows anyone to design and schedule content, regardless of their technical knowledge or resources. With this user-friendly interface you can use your pre-existing images, videos and websites, as you create your custom layouts, to develop content that your audience will love to engage with.

Publish your content from anywhere in the world with just the push of a button. You can also send remote commands, designate specific user privileges, schedule your content to appear at set times and dates and even preview your content from the comfort of your PC.



Why My Signage Portal?

With so many Content Management System platforms available on the market why should you choose My Signage Portal? What sets us apart from other software providers?

- 

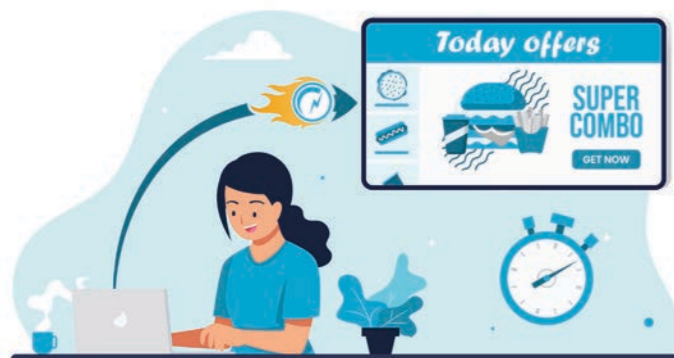
Customisation
- 

Touch Screen Creator
- 

Integrated Solutions
- 

Easy to Understand Workflow
- 

Hardware Pre-Configuration



Rapid Publishing

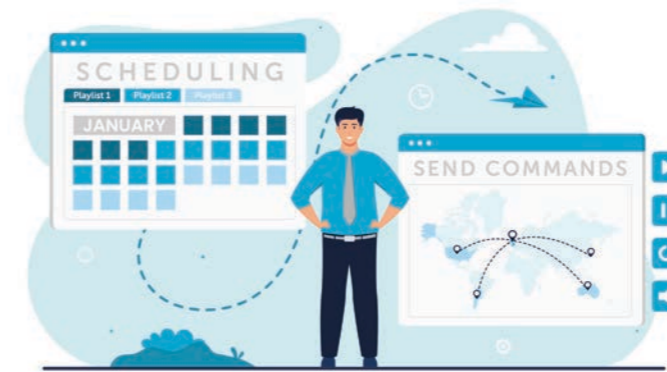
We have developed an easy "Rapid Publishing" tool that allows you to publish or schedule your content in a matter of seconds. You can now send real-time updates to your customers and ensure they always have the latest information.

Simple Setup

All it takes are three easy steps and your content is published in no time. Choose the orientation of your screen, upload your media and click "Publish" - it really is that easy!

Free Digital Signage Templates

Access a wide range of free templates with eye-catching designs and layouts that you can easily edit and make your own.



Control Your Device

When using our software in conjunction with our hardware solutions, there is no need for an external media player and, by having the media player integrated in the hardware, you have full control of the screen itself.

Schedule Playlists

Once your playlist is created, you can choose to either publish your content immediately or schedule times and dates for your content to be displayed. This allows you to display what you want and when you want, having complete control of what your customers are seeing.

Global Remote Commands

Not only can you update the content on your displays remotely from anywhere in the world, you can also send commands to reboot your screens, format the internal memory, stop and start content playback, rotate the orientation, and so much more! You can have full control of your screens no matter where you are.

Create Dynamic Multi Zone Layouts

Design your own unique layouts, in either landscape or portrait orientation, with different zones and layers for your images, videos, text and live webpages. Let your creativity flow and create dynamic and show-stopping content for your customers.

Backgrounds

Set an image or a colour to frame your media zones.

Images

Multiple images playing in a continuous rolling loop.

Static Text

Input custom text values and edit the font, colour and size of your text.

Videos

Multiple videos playing in a continuous rolling loop.

Time

Display the time in a variety of formats, sizes and in whatever colour you want.

Date

Display the date in a variety of formats, sizes and in whatever colour you want.



Logo

Brand your layout with your logo, which will stay on top of all other zones.

Office Documents & PDF's

Display PDF files alongside Microsoft Word, Excel and PowerPoint files.

Webpages

Display a live webpage such as a social media page or live web feed.

Image Overlay

Add an image with transparent sections as a top layer to give the other media zones a frame.

Weather Widget

Display a real time weather forecast for up to the next three days.

Scrolling Text

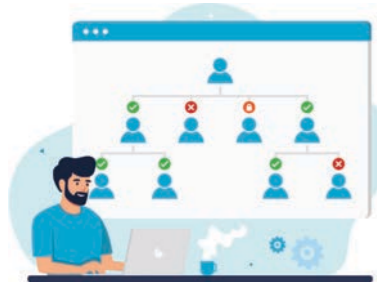
Display a ticker tape message or live RSS feed. From here you can adjust the font, size, colour, speed and direction of the text.

Content Management System



Multi Screen Synchronisation

Because we manufacture a wide range of hardware solutions in conjunction with My Signage Portal, we were able to fully optimise our software and minimise the perceived lag time of synchronisation to less than 0.042 seconds! This allows you to create content that flawlessly flows between multiple screens, creating the ultimate dynamic experience.



User Management

Create and manage unlimited amount of user accounts and set privileges for each user or user group. Not only can you set how much access your users have to certain functions and limit them in other areas, but you can also limit the access to specific screens, giving you complete control of what different users can do.



Reports / Logs

Keep track of every action performed on the CMS from users, screens or players. From seeing the current status of a screen to checking who last updated a player; you can even access content playback reports that are accurate down to the second when proof of play is needed.

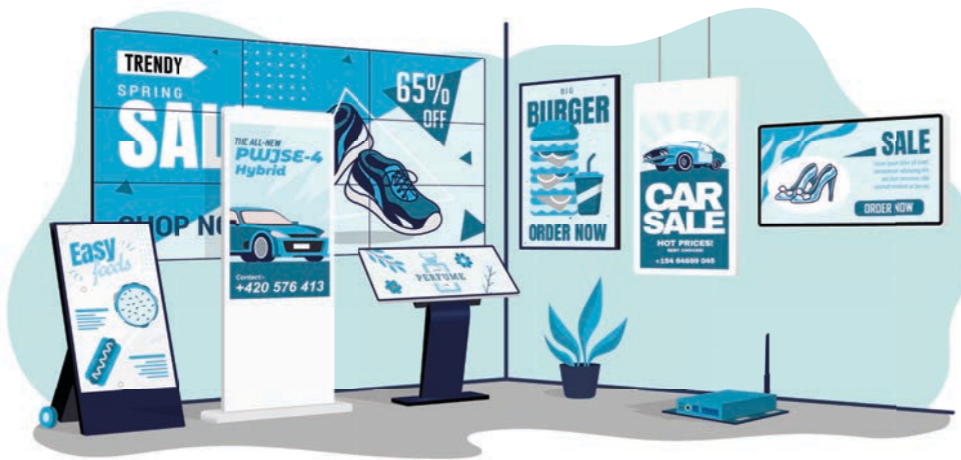


Customise the UI

Change the logo displayed in the top corner and choose a colour scheme based on your company's branding to make this software your own. That's right, you can fully customise My Signage Portal's software interface to your company's style for a fully personalised experience.

What Devices Can Run My Signage Portal?

This software was developed in conjunction with our wide range of digital signage hardware products. From high brightness displays to PCAP touch screens, DV-LED video walls and multiple outdoor ranges, we offer all-in-one solutions that ensure an easy and hassle-free process. All of our displays can be in use 24/7, and are paired with a 3-year warranty and lifetime technical support. Our goal is to make digital signage accessible to everyone so we offer support to our partners and their customers every step of the way.



Products Compatible with Digital Signage CMS				Touch CMS
Slimline Pro Advertising Displays	Android Freestanding Digital Posters	Superslim Freestanding Double-Sided Digital Posters	Network Digital Menu Boards	Android PCAP Touch Screens
Ultra High Brightness Window Displays	Hanging Double-Sided Window Displays	15" Digital Rod Displays	Ultra High Brightness Hanging Double-Sided Displays	Android PCAP Touch Screen Kiosks
High Vibrance Android Advertising Displays	Outdoor Digital Advertising Displays	Outdoor Freestanding Digital Posters	Outdoor Digital Android Battery A-Boards	Freestanding PCAP Touch Screen Posters
4K Large Format Commercial Displays	POS Android Advertising Displays	Ultra-Wide Stretched Bar Displays	Cloud Network Android Media Players	POS Network Android PCAP Touch Screens
LCD Video Wall Displays*	Indoor DV-LED*	Outdoor DV-LED*	4K Slim Bezel Interactive Touch Displays*	Shelf Edge Touch Displays

*When connected via Cloud Network Android Media Players

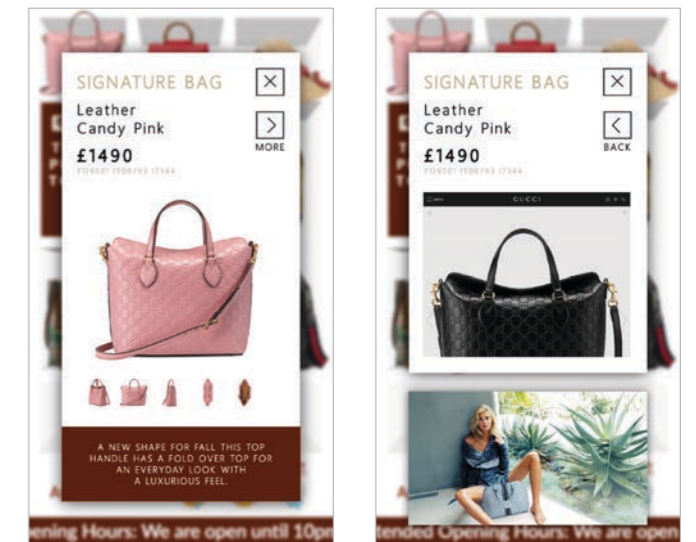
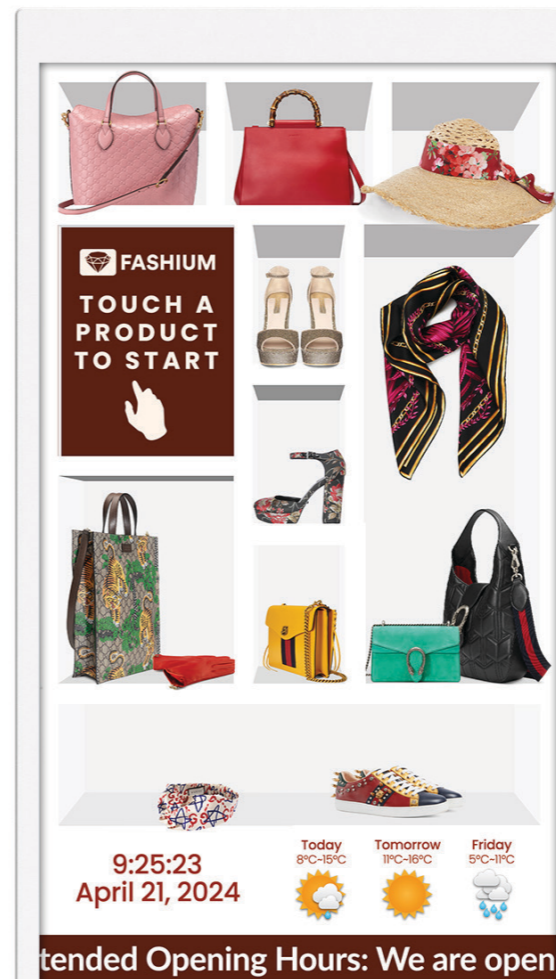
Interactive Experiences With Interactive Content

With My Signage Portal you can create interactive experiences for your customers with no coding or technical knowledge necessary. To make this even easier, both touch and non-touch options are in the same system, giving you the flexibility of upgrading your content to interactive without the need to learn a new piece of software. Simple and easy for both you and your customers.



Create Touch Screen Playlists

Design your own unique touch screen content with our visual builder, use buttons to weave your pages together as you fill pages with your images, videos, galleries and interactive webpages. You can even launch Android apps at the touch of a button from within your playlist. Deploy your touch content to anywhere in the world and experience interaction on a whole new level.



Buttons

Link your different pages together and trigger a host of different actions. Use buttons to prompt videos to start, launch websites, link to different pages or playlists and even launch Android compatible applications; all this without having to write any code.

Apps

If you have an Android compatible app that you would like to use, you can integrate it into your touch screen content. It can then be launched within the playlist with the touch of a button.

Screensavers

You can set a 'timeout' period for your content; if the screen isn't touched during this period you can assign a separate playlist to display automatically. This can include images, videos, webpages and even RSS feeds.

Media Galleries

Create user friendly galleries of your image and video content. Personalise your carousel with the length of each slide and the transition effect.

Webpages

Incorporating websites and webpages into your touch screen content opens up a whole new world of opportunities. Any complicated functions that can't be achieved by using the standard tools of our CMS can be achieved by creating a webpage.